



# GLOBAL HEALTH RESEARCH

Making a difference  
around the world

**wellcome**trust

# MAKING A DIFFERENCE

The Wellcome Trust, founded in 1936, is the largest charity in the UK. Our mission is to foster and promote research with the aim of improving human and animal health. We fund the work of thousands of talented and productive scientists, historians, social scientists, ethicists and science communicators worldwide.

In all of our funding, we aim to invest in excellence, supporting outstanding people with the most innovative and exciting ideas. Between 2008 and 2012, we will spend GBP 4 billion funding grants ranging from support for individual researchers to multimillion-pound investments in large programmes with an enduring impact. Of this budget, we aim to spend more than GBP 80m in each year on health research in developing and restructuring countries.

We make a long-term and sustained commitment to funding, working with our partners, researchers and other organisations to help build a vibrant research community. We support the growth of science and healthcare knowledge and encourage interest and debate around the impact of these areas.

This brochure provides an overview of the different support we offer around the world.



# GLOBAL HEALTH

We aim to support researchers in developing countries to carry out health-related research within their own countries. We are also expanding our funding for a wide range of research into major health issues.

Our international funding focuses on:

- supporting **people**: identifying outstanding researchers and supporting them and their research
- building **excellence**: supporting institutions that provide well-equipped environments where research can flourish
- **embedding** research: ensuring that the research we support strengthens local infrastructures and national institutions
- local **relevance**: funding research that tackles important health issues and that is geared to national priorities.

We fund a wide range of clinical and public health research that can improve human or veterinary medicine, research that examines ethical issues arising from biomedical research and healthcare practice, and activities that facilitate public engagement with health research.

We are keen to ensure that the projects and programmes we support make a practical difference. We seek to fund work that leads to the development of new tools for the prevention and treatment of disease, to promote public awareness, and to improve health policy and practice.

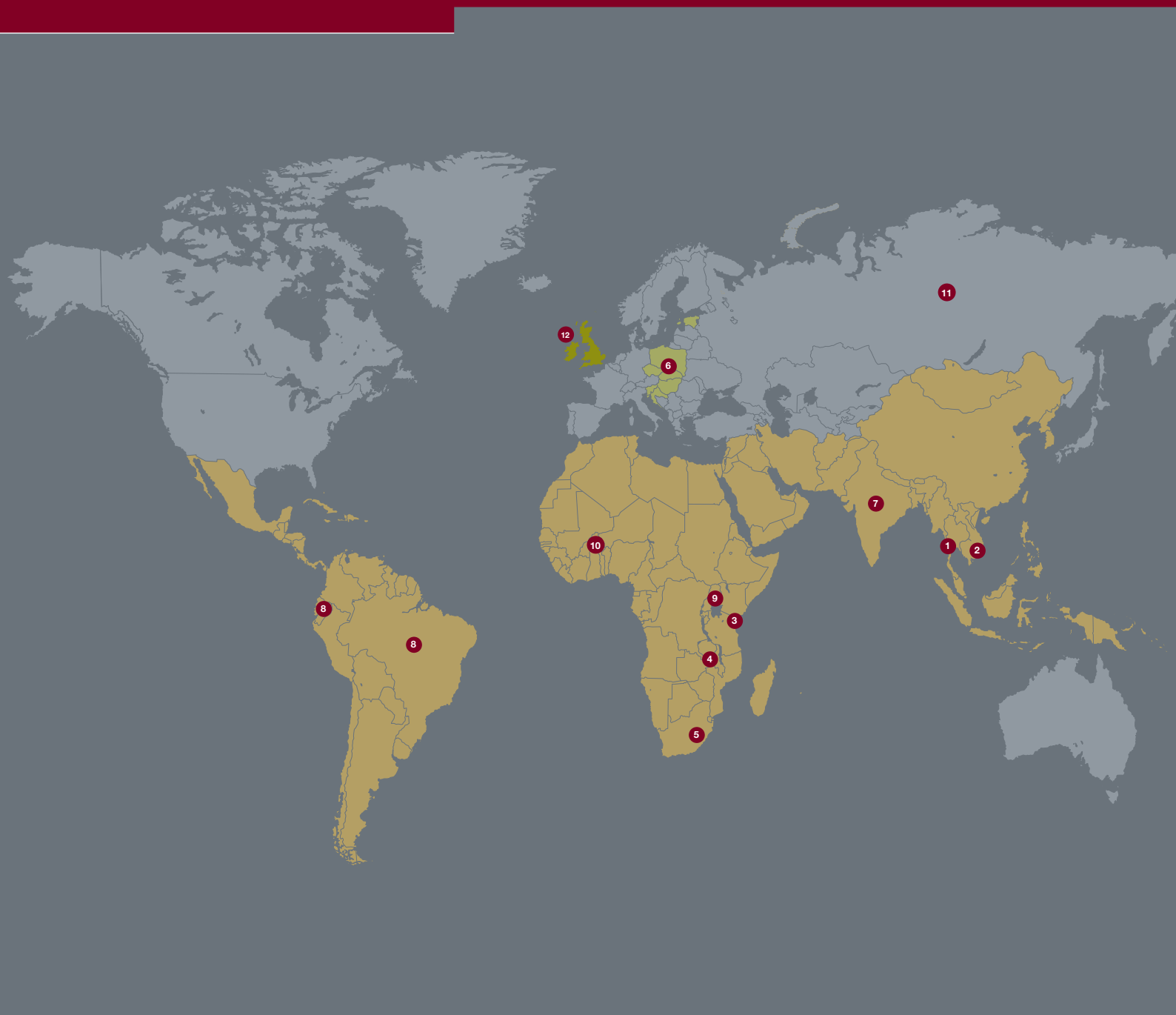
## Capacity building

To help build sustainable research capacity in developing countries, we support the training of researchers to internationally competitive levels, and help to provide institutions with modern equipment and high-class facilities. We also consider capacity-related issues within all of the applications we assess and fund capacity-strengthening initiatives that target specific regions.



Healthcare workers testing for trachoma, Tanzania.

# WELLCOME TRUST GLOBAL HEALTH FUNDING



## KEY

### ■ Developing countries

These are the focus of our global health funding.

### ■ Restructuring countries of Europe

We fund International Senior Research Fellowships in these countries.

### ■ UK and Republic of Ireland (ROI)

A significant proportion of our UK/ROI funding is awarded to individuals who carry out research overseas.



## MAJOR OVERSEAS PROGRAMMES

These are large programmes supported by core funds to provide central facilities for strategic activities, individual fellowships and project/programme grants. The focus of research is on health problems of local and regional significance, with an emphasis on clinical and field-based studies. They have an important role in capacity building, and are closely integrated with local institutions for effective partnerships and long-term sustainability.

### 1 Thailand

Mahidol–Oxford Tropical Research Unit (MORU), part of our South-east Asia Programme. **Sites:** Bangkok, Mae Sot, Ubon Ratchathani, Udon Thani and Vientiane (Laos).

**Local institutions:** Mahidol University, Bangkok; Mahosot Hospital, Vientiane.

[www.wellcome.ac.uk/southeastasia](http://www.wellcome.ac.uk/southeastasia)

### 2 Vietnam

Oxford University Clinical Research Unit (OUCRU), part of our South-east Asia Programme. **Sites:** Ho Chi Minh City and Hanoi.

**Local institutions:** Hospital for Tropical Diseases, HCMC; National Institute for Infectious and Tropical Diseases.

[www.wellcome.ac.uk/southeastasia](http://www.wellcome.ac.uk/southeastasia)

### 3 Kenya

Kenya Medical Research Institute (KEMRI)–Wellcome Trust Research Programme. **Sites:** Kilifi and Nairobi. **Local institution:** KEMRI Centre for Geographic Medicine Research, Coast.

[www.wellcome.ac.uk/kenya](http://www.wellcome.ac.uk/kenya)

### 4 Malawi

Malawi–Liverpool–Wellcome Trust Research Programme.

**Site:** Blantyre. **Local institution:** College of Medicine, University of Malawi, Blantyre.

[www.wellcome.ac.uk/malawi](http://www.wellcome.ac.uk/malawi)

### 5 South Africa

Africa Centre for Health and Population Studies. **Site:**

KwaZulu-Natal. **Local institution:** University of KwaZulu-Natal.

[www.wellcome.ac.uk/southafrica](http://www.wellcome.ac.uk/southafrica)

## OTHER EXAMPLES OF OUR GLOBAL HEALTH FUNDING

### 6 Restructuring countries of Europe

International Senior Research Fellowships. **Located:** Croatia, Czech Republic, Estonia, Hungary, Poland, Slovakian Republic and Slovenia.

### 7 India

Public Health Foundation of India, Capacity Strengthening Strategic Awards. **Located:** Delhi and other locations across India.

### 8 Brazil and Ecuador

Cohort study to investigate impact of sanitation on disease. **Located:** Salvador, São Paulo and Porto Alegre (Brazil) and Quito (Ecuador).

### 9 Uganda

Capacity strengthening award for Uganda Virus Research Institute. **Located:** Entebbe.

### 10 Burkina Faso

Investigating effect of increasing urbanisation on health inequities. **Located:** Ouagadougou.

### 11 Russia

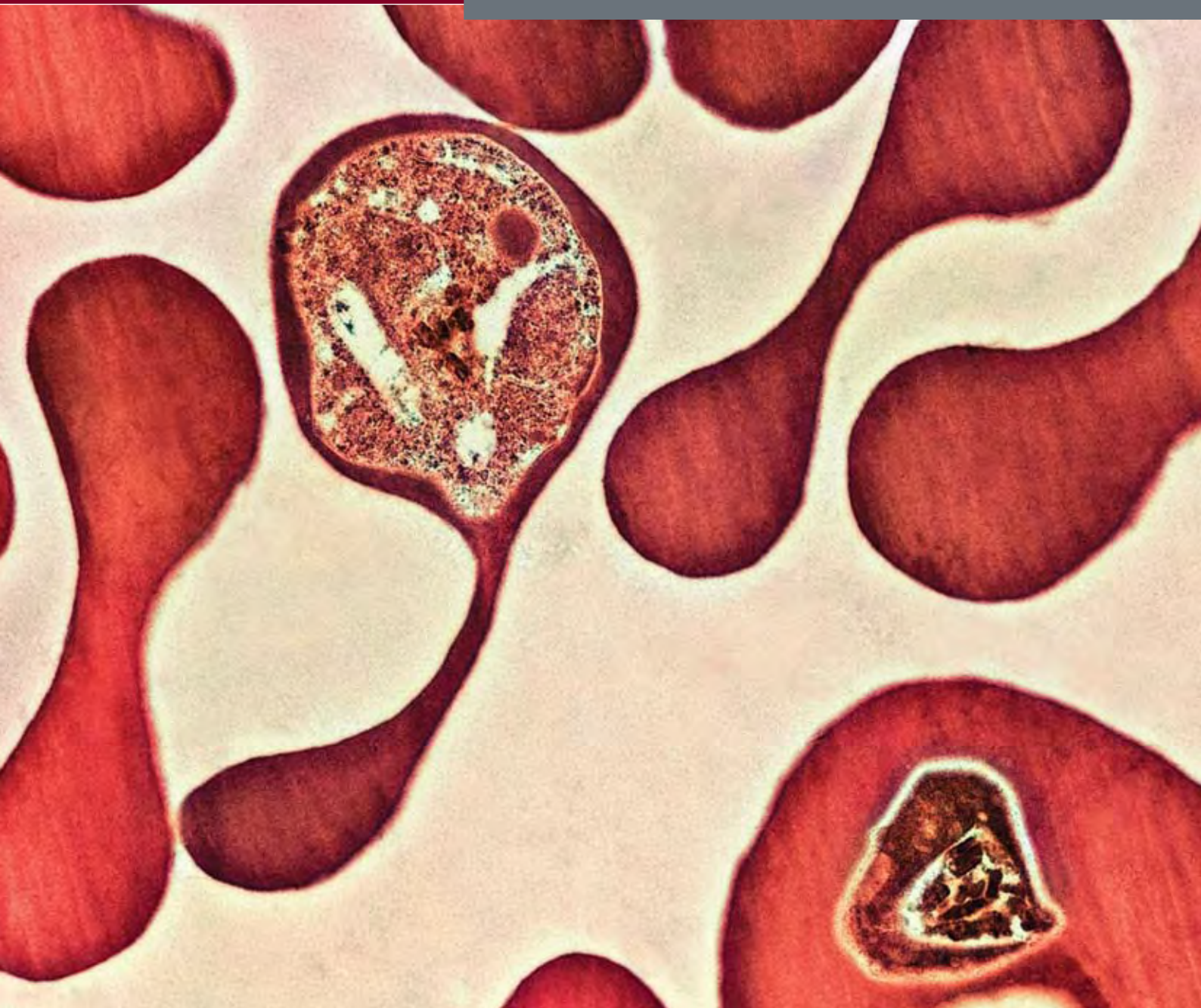
Investigation of alcohol and mortality in Russia.

**Located:** Izhevsk.

### 12 UK and ROI

Global health research is not only delivered in developing and restructuring countries – the Trust also funds important research into tropical medicine in many UK institutions. We fund four Centres for Research in Clinical Tropical Medicine based at Liverpool, Oxford, Bloomsbury and Imperial College that support UK/ROI researchers working in developing countries.

# GLOBAL HEALTH SCIENCE RESEARCH



Coloured transmission electron micrograph (TEM) of red blood cells infected with malaria parasites (*Plasmodium* sp.). Dr Gary Gaugler/Science Photo Library Medicine/Science Photo Library

Our funding is focused on infectious diseases and the public health aspects of communicable and non-communicable diseases.

For first-time applicants from developing and restructuring countries, the main routes to access our funding are through a fellowship application or project grant in collaboration with a UK institution. Applicants with a track record of Wellcome Trust funding may also apply for project and programme grants (without needing a UK collaborator) as well as applying for equipment, resources and travel grants.



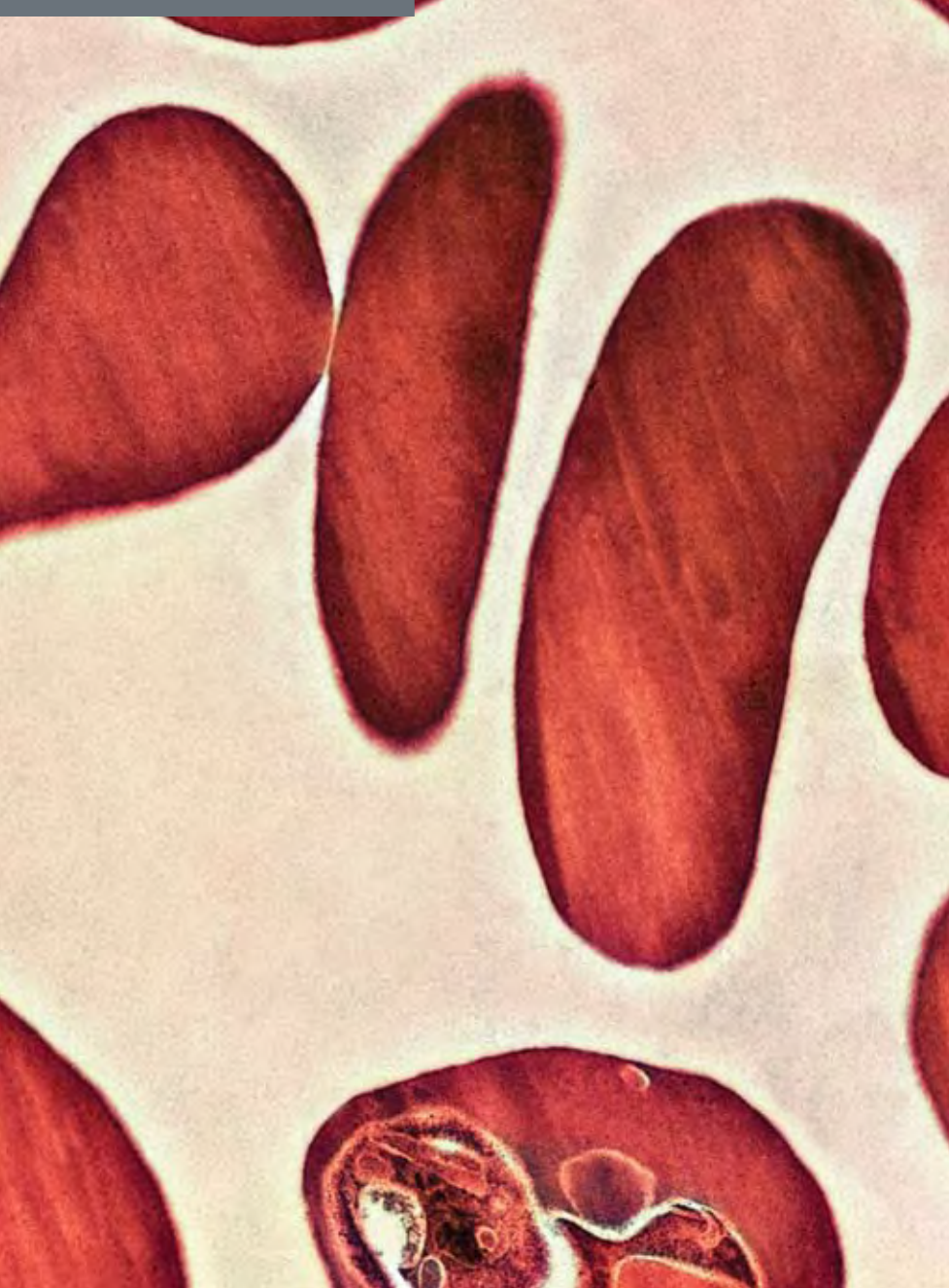
**Fellowships in Public Health and Tropical Medicine** provide support for researchers from developing countries who are at any stage in their career. The range includes Master's, training, intermediate and senior awards (see pages 8–9).

**Project grants** (support for up to three years) and **programme grants** (support for up to five years) provide funding for high-quality, hypothesis-driven research that is relevant to human and animal health. The grants are normally used to support international collaborations between UK or Republic of Ireland universities and overseas institutions based in developed or developing countries.

**Equipment and resources grants** allow researchers to develop technologies or to refine existing techniques, to establish or maintain biomedical resources (including databases and collections) for the benefit of the wider scientific community, or to purchase multi-user items of equipment.

**Flexible Travel Awards** enable successful scientists to obtain experience in new disciplines, interdisciplinary areas or emerging aspects of their own field.

**Strategic Awards** provide flexible forms of support to facilitate world-class research and/or training that is not possible under existing schemes. The aim is to add value to excellent research groups through a range of activities such as interdisciplinary research collaborations or developing and establishing new technologies, facilities or resources.





# INTERNATIONAL PUBLIC ENGAGEMENT

Health research has a significant impact on people's everyday lives. The outcomes and processes of research have broad implications for national societies and local communities. We encourage researchers to consider the key stakeholders in their research and to develop appropriate communication and public engagement strategies. Several of our Major Overseas Programmes employ dedicated communications and engagement staff.

Our **International Engagement Awards** aim to generate engagement between health researchers and the public in developing countries.

These awards can be used to:

- stimulate dialogue about health research and its impact on the public
- investigate and test new methods of engagement, participation, communication or education around health research
- promote collaboration on engagement projects between researchers and community or public organisations
- support Wellcome Trust-funded researchers in developing countries in engaging with the public and policy makers.

The scheme is open to a wide range of organisations. Applicants could include media professionals, educators, science communicators, health professionals and researchers in bioscience, health, bioethics and history. Partnership projects are also welcomed.





Biomedical research and the development and delivery of healthcare often raise ethical issues in developing and restructuring countries. Many of these issues are the same as in industrialised countries, but others are specific to the cultural, economic, religious and socio-political circumstances of particular regions or countries.

Our **Biomedical Ethics in Developing Countries** grant schemes offer support for research in this area, which includes the ethics of biomedical research (whether international collaborative research or locally initiated research), ethical issues arising in the translation of research into practice, ethical issues arising in clinical care, and ethical issues arising from the delivery of care (including policy and public health).

We fund **Research Studentships** (see pages 8–9), **research travel grants** to help collaborative research and networking, **project grants** to meet the direct costs of research projects and **symposia** that bring representatives of different disciplines together to discuss ethical issues arising from research or healthcare practice in developing countries.

Through these grant schemes, we aim to:

- support high-quality research in biomedical and healthcare ethics in developing and restructuring countries
- strengthen capacity and support scholarship in research in biomedical and healthcare ethics in developing and restructuring countries
- encourage the application of ethics research findings to policy and practice in developing and restructuring countries.

We also support the Global Forum on Bioethics in Research.



## CAREERS

We aim to support outstanding people and excellent research teams to build sustainable research capacity. We offer a range of fellowships to support high-quality training and career progression for researchers with a background in biomedical science, medicine, veterinary medicine, public health, social science or the humanities.

Our **Public Health and Tropical Medicine fellowship** schemes cover research on infectious and non-communicable diseases within the fields of public health and tropical medicine that is aimed at understanding and controlling human and animal diseases of local, national or global health importance.

Some fundamental biomedical studies are acceptable, but projects focused solely on *in vitro* or animal model studies will not normally be considered, although may still be eligible for Trust support through one of our basic science or clinical funding schemes.

**International Senior Research Fellowships** provide support for outstanding researchers, either medically qualified or science graduates, who wish to establish a research career in an academic institution in India or selected European countries (Croatia, Czech Republic, Estonia, Hungary, Poland, Slovakian Republic or Slovenia).

**Research Studentships** in biomedical ethics in developing countries enable young scholars to undertake basic training in ethics research and methods by up to three years of full-time research leading to a doctoral degree at a university in a developing or restructuring country (or, where this support is not available, at a university in the UK or the Republic of Ireland).





Full details about our global health activities are available from our website: [www.wellcome.ac.uk/globalhealth](http://www.wellcome.ac.uk/globalhealth).

Brochures and leaflets relating to our global health activities are available and can be requested by emailing [communications@wellcome.ac.uk](mailto:communications@wellcome.ac.uk), or by writing to Stakeholder Communications at the Wellcome Trust address given below.

We are happy to discuss your proposal and advise you at all stages of the application process that relate to grants and initiatives detailed within this brochure.

## CONTACT DETAILS

For global health research funding enquiries:

**T** +44 (0)20 7611 2020

**F** +44 (0)20 7611 8545

**E** [phatic@wellcome.ac.uk](mailto:phatic@wellcome.ac.uk)

For International Engagement Awards:

**T** +44 (0)20 7611 2100

**F** +44 (0)20 7611 8269

**E** [internationalengagement@wellcome.ac.uk](mailto:internationalengagement@wellcome.ac.uk)

For Biomedical Ethics:

**T** +44 (0)20 7611 8536

**F** +44 (0)20 7611 8254

**E** [biomedicalethics@wellcome.ac.uk](mailto:biomedicalethics@wellcome.ac.uk)

Contact the International Activities team for questions directly relating to Wellcome Trust global health research strategy:

**E** [globalhealth@wellcome.ac.uk](mailto:globalhealth@wellcome.ac.uk)

### Wellcome Trust

Gibbs Building  
215 Euston Road  
London NW1 2BE, UK



The Wellcome Trust is the largest charity in the UK. It funds innovative biomedical research, in the UK and internationally, spending over £600 million each year to support the brightest scientists with the best ideas. The Wellcome Trust supports public debate about biomedical research and its impact on health and wellbeing.

The Wellcome Trust is a charity registered in England, no. 210183. Its sole trustee is The Wellcome Trust Limited, a company registered in England, no. 2711000, whose registered office is at 215 Euston Road, London NW1 2BE, UK. SA-4079.10/125/11-2008/MD