



Impact and the REF

UKCDS / Development Studies Association
22 October 2009

David Sweeney
Director (Research, Innovation and Skills)

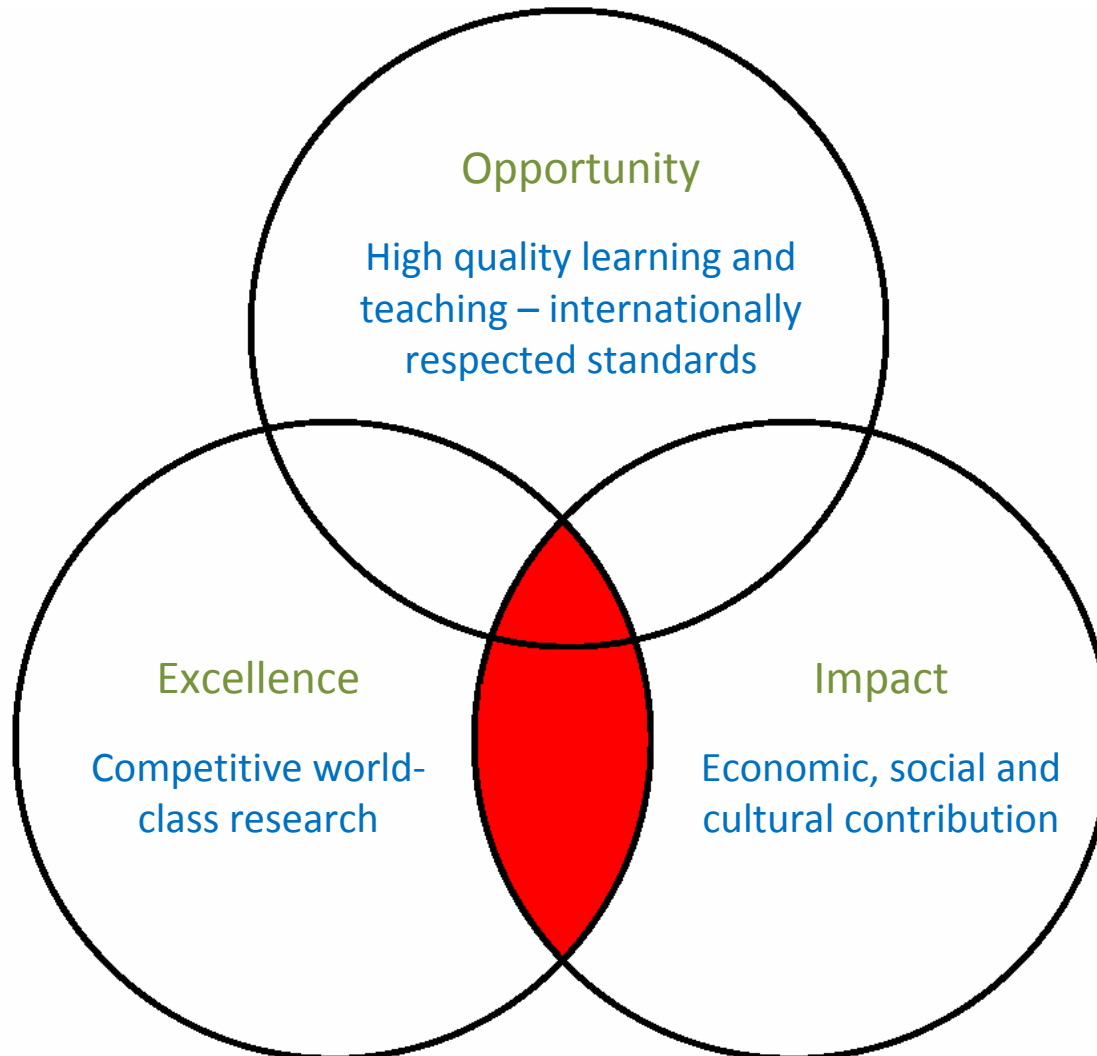
Key results

- 18 UK universities in the world top 100
- 12% share of the world's scientific citations for 1% of the population
- 33% of the world's publications in art and humanities
- 11% of international trade in higher education
- Generating value of £55bn to the economy and promoting important health and social benefits

Key results

- 41% real terms growth in QR spending between 2002-03 and 2009-10
- an established infrastructure for commercialisation, innovation and enterprise – generating £10.3bn in value
- a £4.9 - £7.1 return on every £1 of HEIF
- rapid support for business and graduates through ECIF
 - leveraging £31m on £25m
 - benefiting 50,000 people and 11,700 business

Key priorities for higher education



REF – a UK-wide framework for assessing research quality

... maintaining the capacity of higher education to undertake world-leading research across a range of academic disciplines, promoting economic growth and national well-being and the expansion and dissemination of knowledge

*REF Consultation
September 2009/38*

hefce

The purpose of the REF

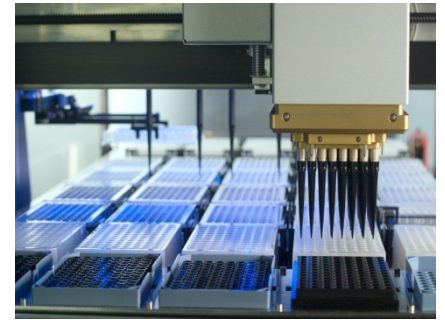
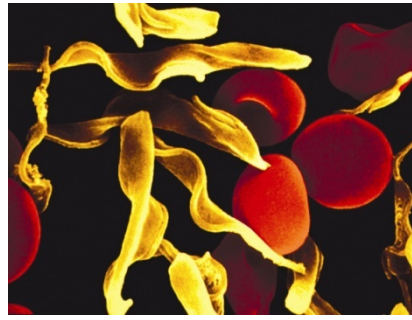
- to secure the continuation of a world-class dynamic and responsive research base in the UK through
 - funding: selective funding allocations informed by quality assessment
 - benchmarking and information: establishing reputational yardsticks
 - accountability: demonstrating that public investment in research is effective and delivers public benefit

Key aims of the REF

- Produce comprehensive quality assessments
- Drive up quality across the HE research base
- Support innovative and curiosity-driven research
- Encourage effective dissemination and application, and interchange of research staff and ideas
- Reward social and economic benefits built on excellent research
- Support better management and sustainability of the research base

Research excellence

- sustaining the balance between curiosity driven research and work targeted on national priorities
- investing in infrastructure and human capital
- long term commitment of funding
- vibrant postgraduate and postdoctoral communities
- the research excellence framework



REF – key features

- a focus on research excellence, benchmarked against international standards
- recognition for building on excellent research to deliver economic and social benefits
- a vibrant research environment, supporting the continued flow of excellent research and its effective dissemination
- coherent UoAs and fewer of them



Louis Pasteur 1822 - 1895

- proved that microorganisms cause fermentation and disease
- originated the idea of vaccines
- performed important pioneering work in stereochemistry
- originated the process of pasteurisation
- saved the beer, wine and silk industries
- saved the life of Joseph Meister
- developed a custom built laboratory of physiological chemistry at École Supérieure (1867)
- inaugurated the Pasteur Institute (1888)



Louis Pasteur 1822 - 1895

- proved that microorganisms cause fermentation and disease
- originated the idea of vaccines
- performed important pioneering work in stereochemistry
- originated the process of pasteurisation
- saved the beer, wine and silk industries
- saved the life of Joseph Meister
- developed a custom built laboratory of physiological chemistry at École Supérieure (1867)
- inaugurated the Pasteur Institute (1888)

world leading outputs

economic and social impact

the right environment

hefce

Louis Pasteur 1822 - 1895

‘ Dans les champs de l'observation le hasard ne favorise que les esprits préparés ’

Lille 1854

‘ Il n'existe pas de sciences appliquées mais seulement des applications de la science ’

Lyon 1872

hefce



Louis Pasteur 1822 - 1895

‘ Where observation is concerned, chance favours only the prepared mind ’

Lille 1854

‘ There are no such things as applied sciences, only the applications of science ’

Lyon 1872

hefce

A wider commitment to impact

- an unfailing belief in institutional autonomy
- a strong commitment:
 - excellence in higher learning and research
 - business and community
- the major institutional funder working in partnership with project funders
- a strong belief in the value of QR and HEIF
- a willingness to make incisive interventions – SDF, ECIF
- a broker between higher education and the government

Impact and the REF

- REF will continue to focus on excellence...
- With significant additional recognition where institutions have built on excellent research to contribute to the economy or society
- REF will:
 - Showcase the success of UK research in contributing to the economy and society
 - Encourage more effective dissemination, application and exploitation of research

Assessing impact - principles

- An excellent submission should include a portfolio including work that moves the discipline forward and work that benefits the economy or society
- REF to include a new, discreet element to assess economic, social, public policy, cultural and quality of life impact (not academic impact)
- Impact linked to research of the highest quality
- Assessed at the level of whole units
- Assessed against equally demanding standards to the assessment of outputs

REF

- Objectives
- Why Impact?
- How Impact?
 - Portfolio
 - Assess not measure
 - When Impact?
- Desired Outcomes
- Working together – your role

Assessing impact - challenges

- *Time lags* – we will look at impacts that are evident during from REF period (2008-2012), underpinned by research over a longer timeframe
- *Attribution* – case studies to tease out how the research of *contributed* to the impacts
- *Limitations of metrics* – expert panels will assess rather than measure impact, based on narrative supported by indicators
- *Corroboration* – could be scope for third party verification, and expert panels to judge credibility of the evidence

Approach to assessing impact (1)

- Submitting units to provide the following evidence:
 - a proforma providing key evidence for the unit as a whole
 - a number of case studies providing examples of impact and explaining the unit's contribution (in terms of high quality research and its exploitation)
- The proforma and case studies to include indicators as supporting evidence (drawn from a 'common menu')

Approach to assessing impact (2)

- Expert panels to assess evidence in terms of the 'reach' and 'significance' of the impacts
- We intend they will produce a graded profile, using four starred categories of impact
- The impact profile to contribute 20-30% of the overall REF outcomes
- All panels to include substantial user representation
– we suggest user members focus on the impact element, with reviewing outputs as optional

REF framework

Outputs (60%)

Quality of all types of research



Expert review of selected outputs (informed by citation information in appropriate UoAs)

Impact (25%)

Economic, social, cultural and quality of life benefits



Narrative statement and case studies, supported by indicators

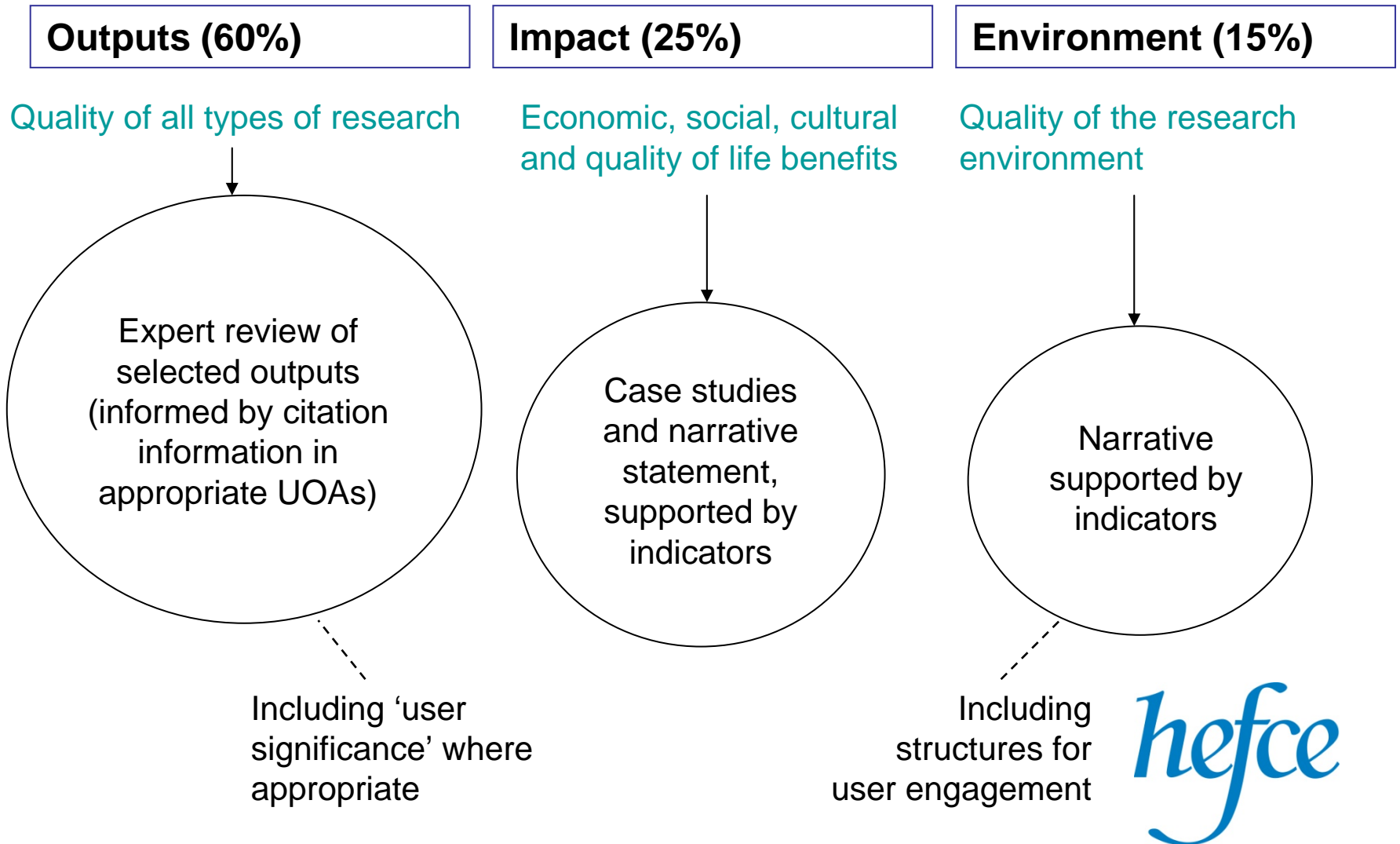
Environment (15%)

Quality and sustainability of the research environment



Narrative supported by indicators

The REF framework



REF timetable

Sep – Dec	Consult on REF proposals
2009	Initiate impact pilot
2010	Complete impact pilot Announce consultation outcomes
2012	Submissions due
2013	Assessment and outcomes, to inform funding from 2014

Where we are now

- Our proposed approach to assessing impact is based on extensive informal consultations and expert advice
- A significant weighting for impact across all UOAs (our preference is for standard weightings)
- A broad generic approach to assessing impact:
 - Enabling all disciplines to showcase their full range of benefits
 - The criteria and indicators to be tailored by panels where appropriate
 - Impacts to be assessed *within* not *between* each UOA

Further work

Our aim is to:

- Develop a robust methodology
- Carry the sector
- Ensure user participation

Through:

- The current consultation
- The pilot exercise: your efforts and input will be vital
- Further workshops to investigate discipline-specific issues
- Active contacts with users